

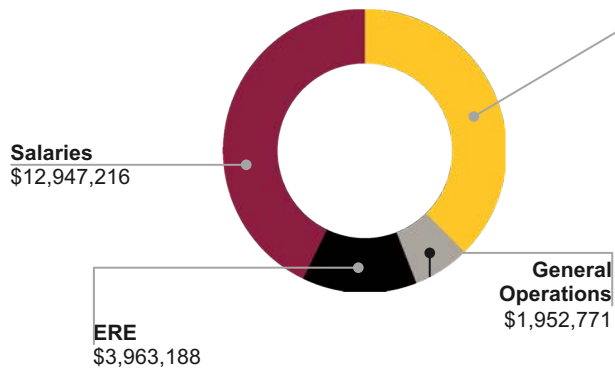




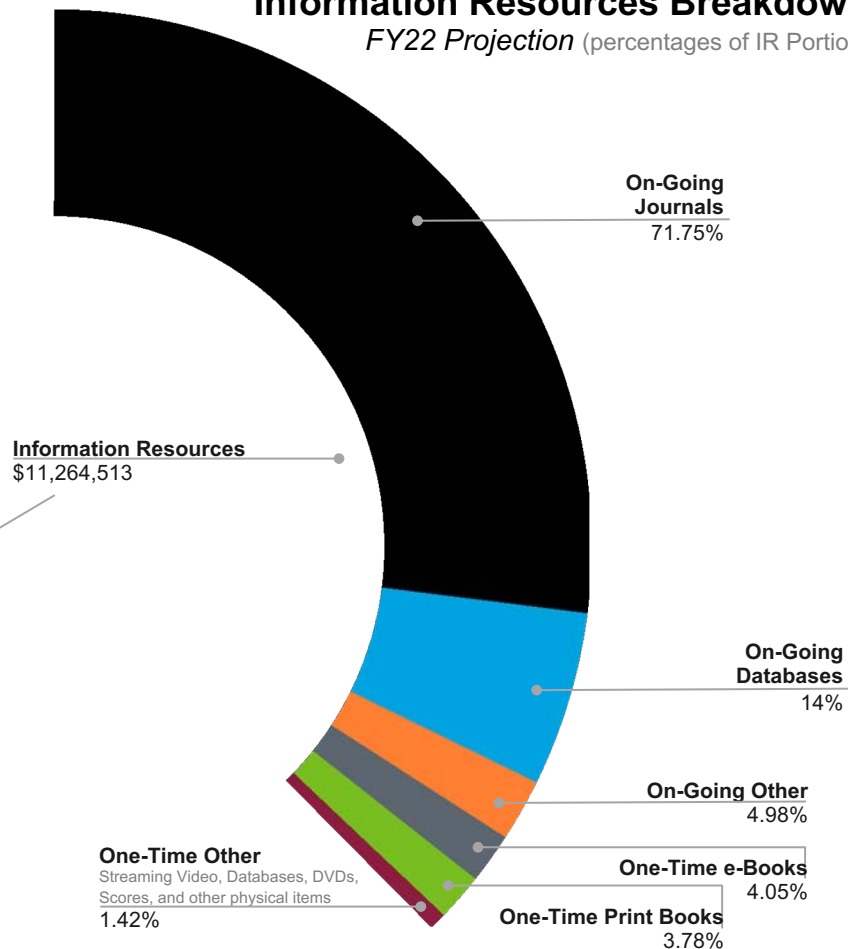
**In a networked world, libraries  
catalyze universal learning,  
transformative research, and  
human development.**

# Overall library budget and Information Resources budget

## General Tuition Operating Budget FY22

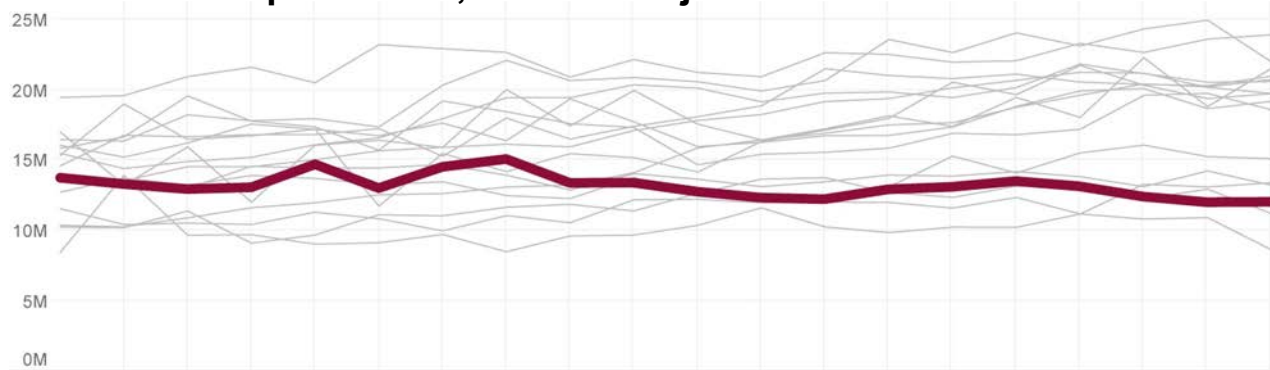


## Information Resources Breakdown FY22 Projection (percentages of IR Portion)

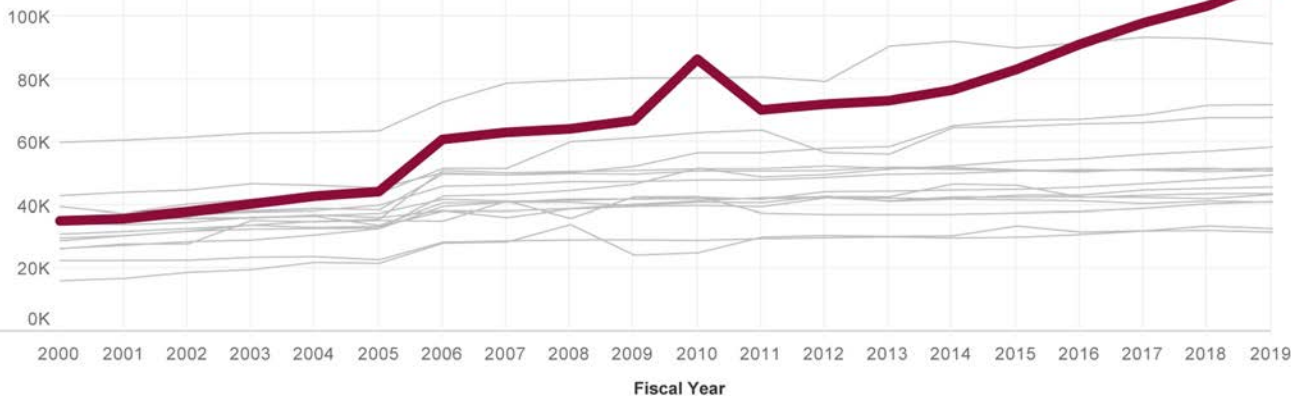


# Trends in Collections Expenditures

## Total Materials Expenditures, Inflation Adjusted



## Student Enrollment



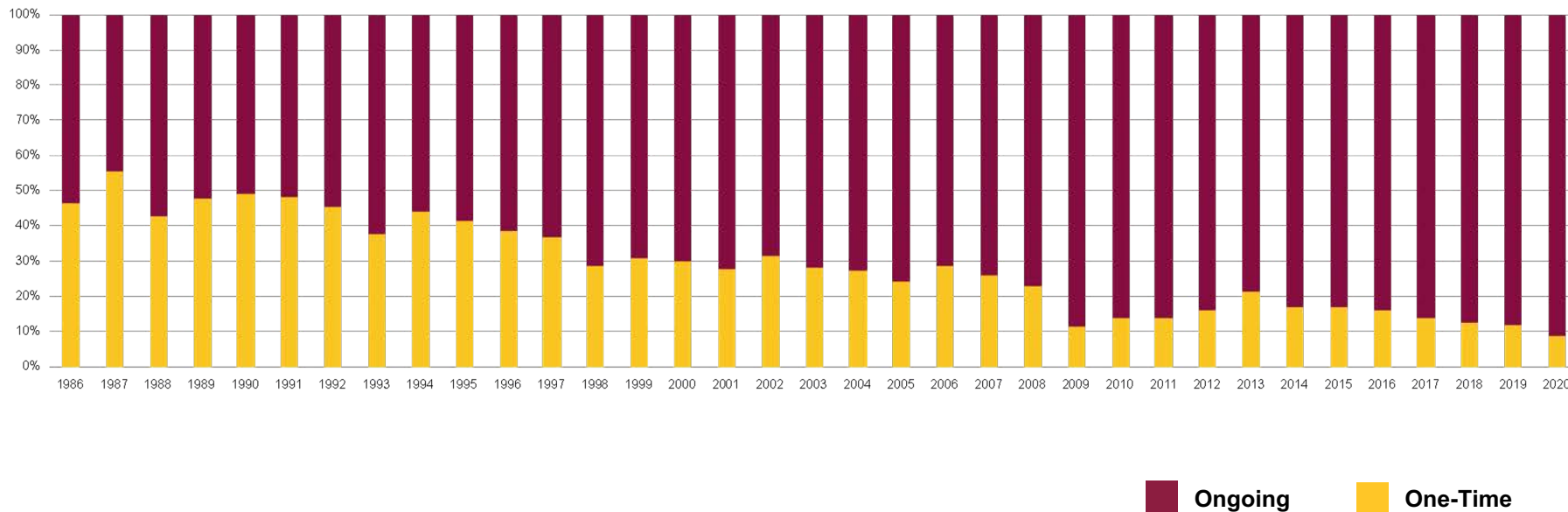
ASU

ABOR peers

# Subscriptions are a growing % of a static budget

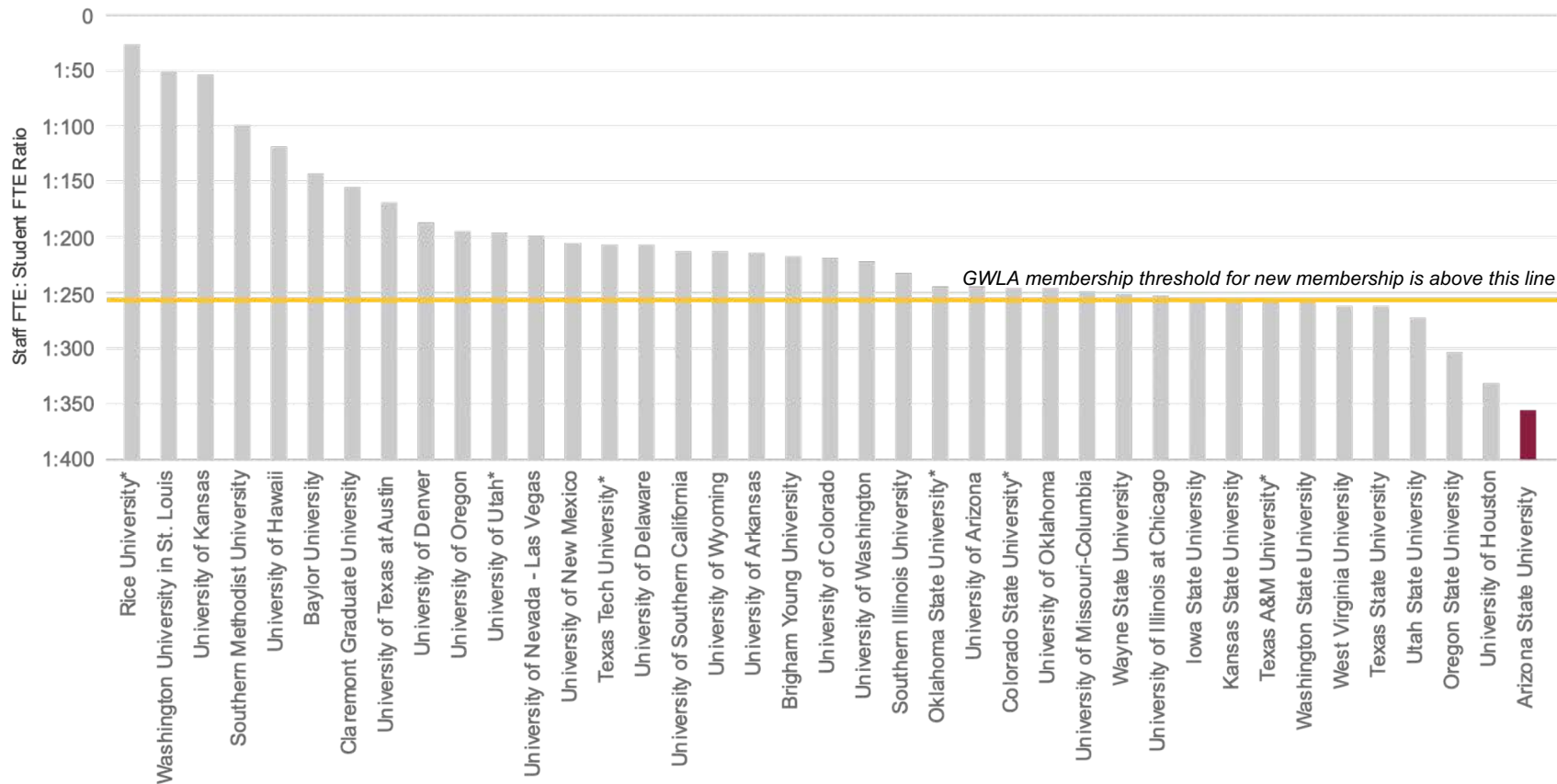
An increasing percent of our collections budget is committed to ongoing journal, database, and serial expenditures, leaving little each year for other materials (manuscripts, rare books, data sets) and personnel.

## IR Expenditures, Ongoing and One-Time (1986-2020)





# Staff to Student Ratio against GWLA Peers



# Major initiatives launched

with financial support from the university and external sources

## Senator John McCain archives

Funding source: US Senate

Three archivist positions

Processing of this collection has begun and materials will be at ASU and available for researchers to use by 2024

## Community Driven Archives

Funding sources: Mellon Foundation Grant, LIFT Initiative, ASU Library

Two permanent archivist positions

Has fundamentally changed vision of all ASU archives

## Research Data Services

Funding source: Provost's office investment

Two professional data management and curation positions

Partnered with Knowledge Enterprise on data repository

# Major initiatives launched or enhanced without additional funding support

## Labriola National American Indian Data Center

Four positions: director, librarian and two support professionals.

Also enhancing in person space in Hayden and Fletcher

## Map and Geospatial Hub

Three professional positions (director and two staff)

Transformed an aging traditional map collection into a high tech innovative service.

## Makerspace

Three professional positions (head plus two support staff).

Collaborative space, tools and technologies for students from varied fields and disciplines to learn new skills and create new things.



# Gaps in Capacity

Personnel gaps in key areas hinder our ability to meet the research and educational needs of students and faculty.



## Technology Services

Thinly staffed, several key vacancies, competition for such personnel intense and expensive. We keep the trains running, barely, with little headroom for innovation.



## Distinctive Collections

Working with academic units to strengthen collection of unique materials and provide staff to support their use in research and teaching.



## Outreach and Instruction

Supporting student success through work with undergraduate curriculum particularly.



## Collections Management

Managing combination of print and digital collections. Some critical operations staff now on soft money.

# Opportunities

To expand reach and impact

## Collecting to match our ambitions

Outstrip inflation, support new and burgeoning academic programs, support needs of most ambitious faculty for specialized resources.

## Innovation in Technology and Collections

Support digital access to resources for teaching and research drawing on deep learning, AI, etc.

## Open Science

Support President's initiative to make ASU research data and research publications as widely and freely available as possible, within and beyond the academic community.





## Indigenous Land Acknowledgement

*The ASU Library acknowledges the twenty-two Native Nations that have inhabited this land for centuries. Arizona State University's four campuses are located in the Salt River Valley on ancestral territories of Indigenous peoples, including the Akimel O'odham (Pima) and Pee Posh (Maricopa) Indian Communities, whose care and keeping of these lands allows us to be here today. ASU Library acknowledges the sovereignty of these nations and seeks to foster an environment of success and possibility for Native American students and patrons. We are advocates for the incorporation of Indigenous knowledge systems and research methodologies within contemporary library practice. ASU Library welcomes members of the Akimel O'odham and Pee Posh, and all Native nations to the Library.*