
Research Computing

Faculty Senate Update for Faculty Engagement

Brandon Mikkelsen, Barnaby Wasson

Feb 23, 2018

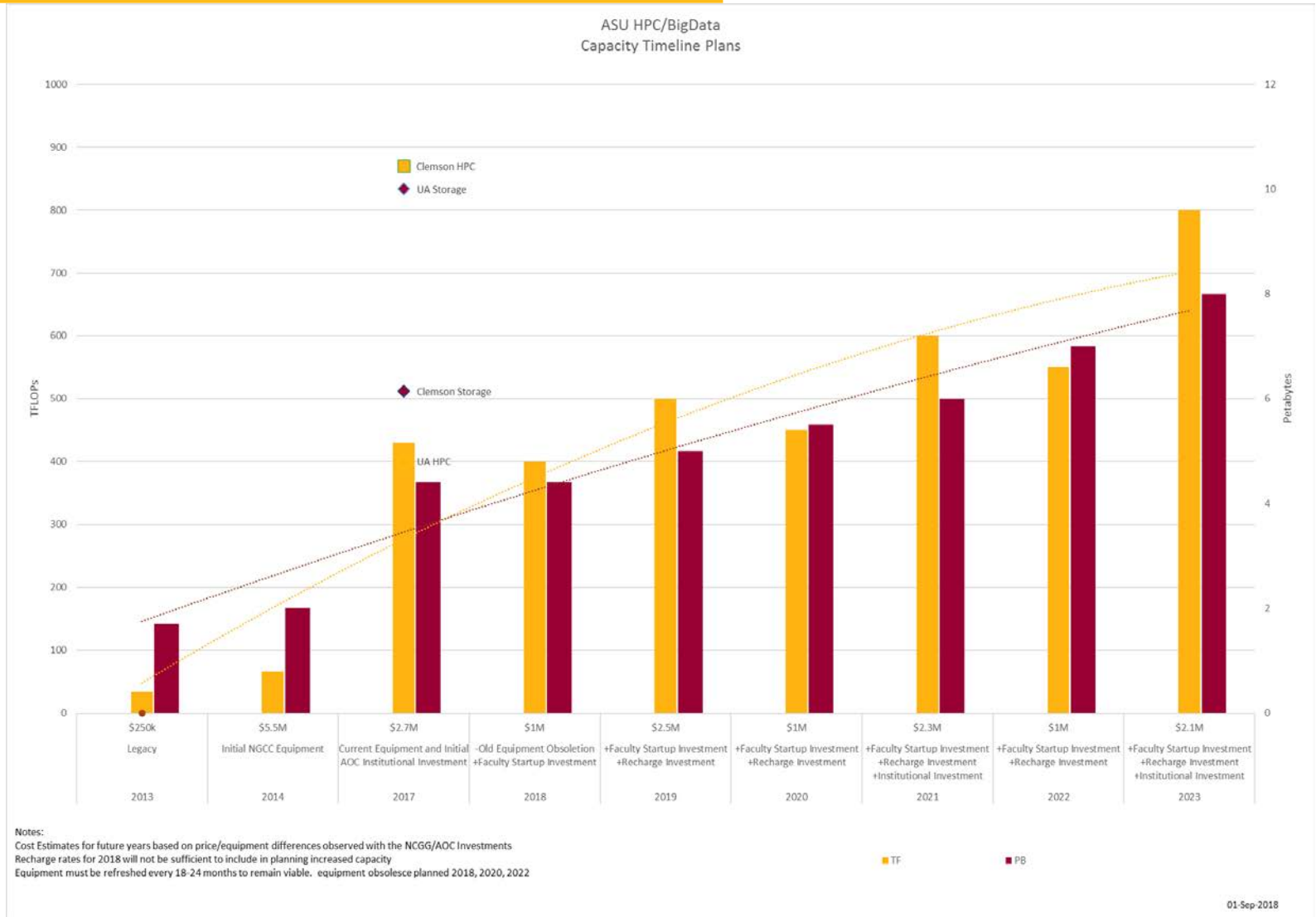
Agenda

- Brief description of supply (new cluster)
- Show existing demand
- Show current marketing material
- Show current training opportunities
- Discussion points:
 - How do we measure demand? How can we see increases in demand?
 - Mechanisms and facilities we can use to identify people to bring in?

Supply/Demand

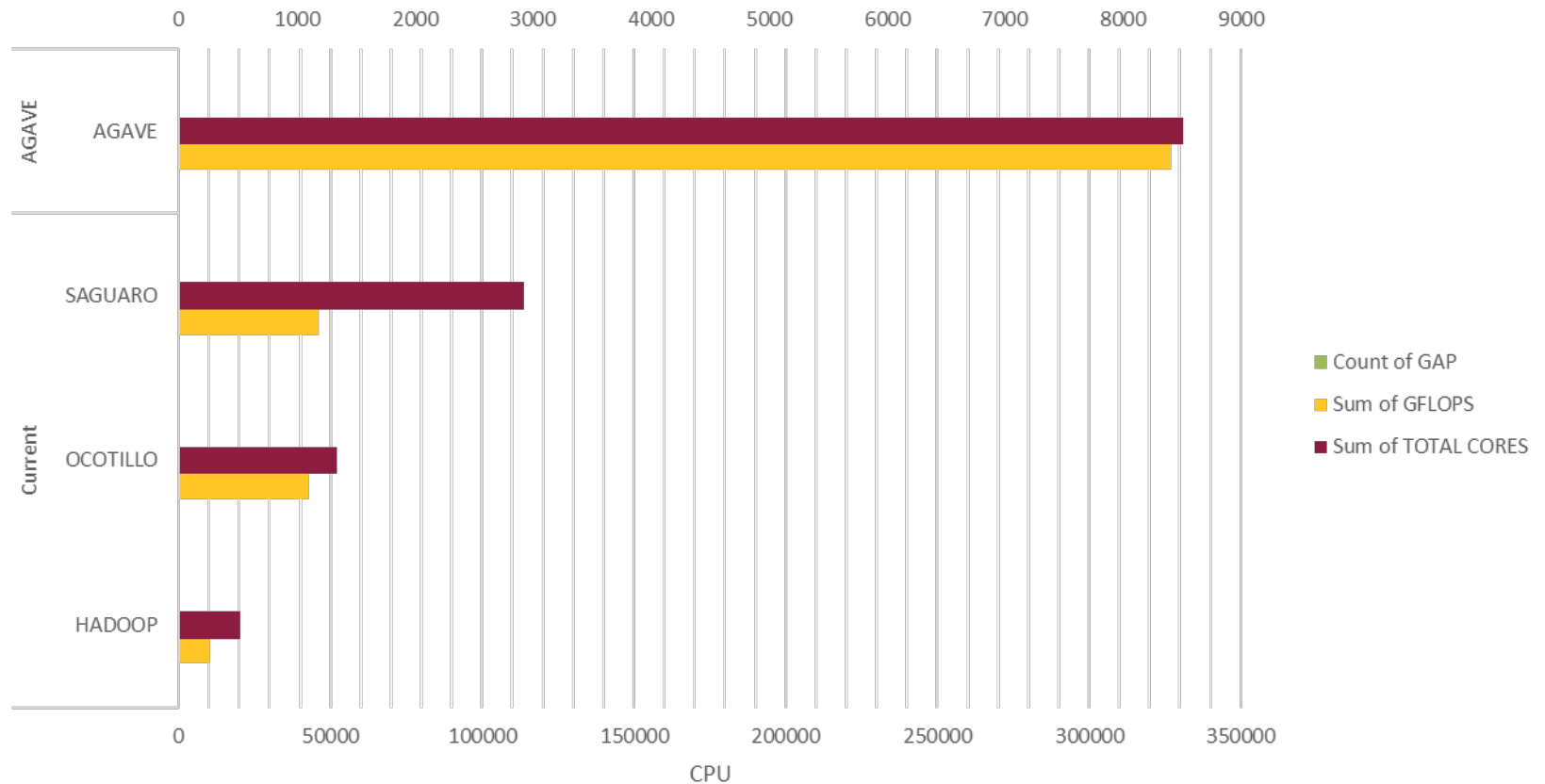
@asuhpc

5 Year Strategic Plan



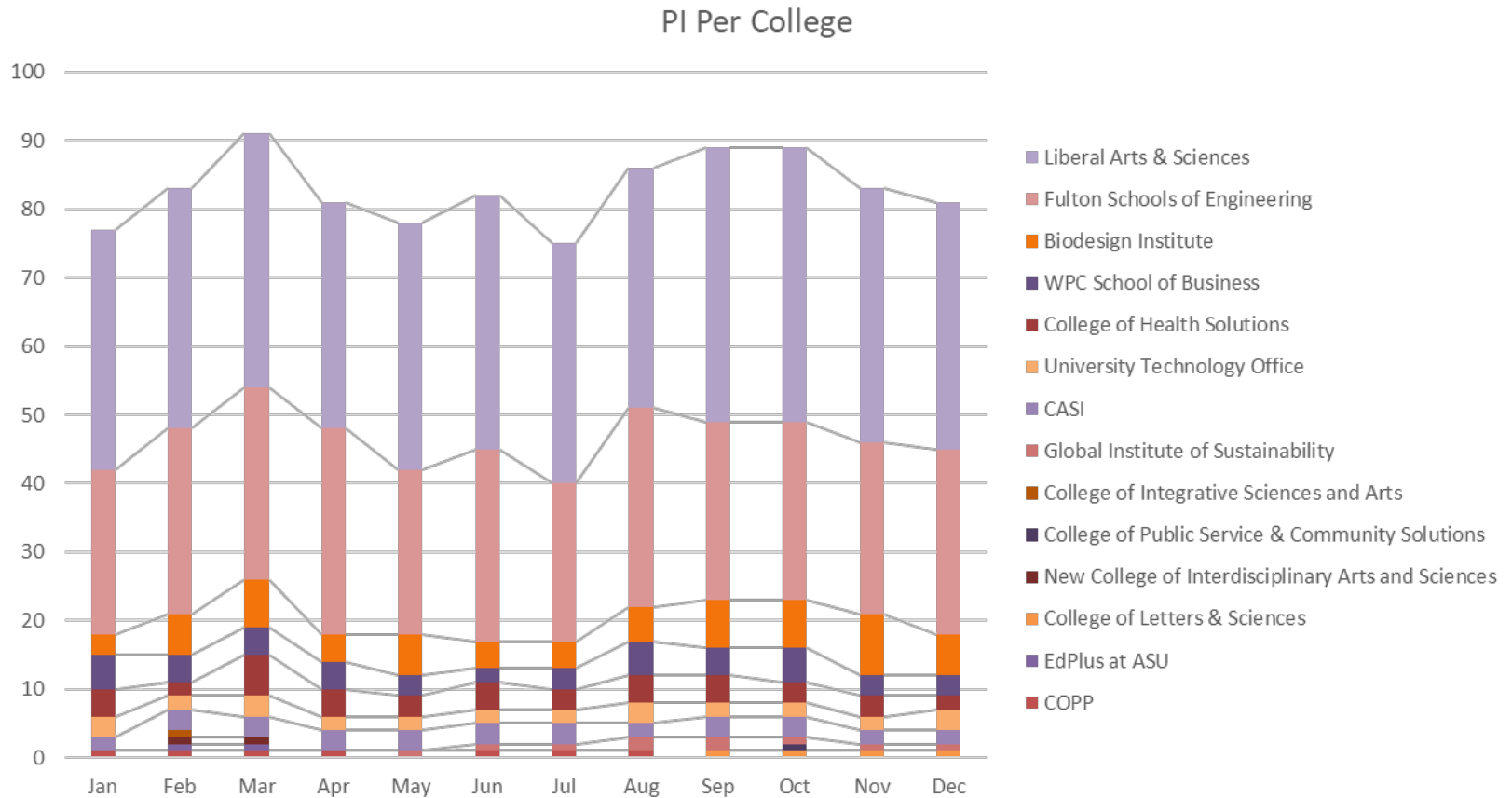
Internal Cluster CPU Capabilities

CORE Comparison - CORE and GFLOP



~9.7M Core Hours/Month

2017 Usage – by PI by College



2017 Usage – by PI by College

Distinct Count of PI	Month												
College	Jan	Feb	Mar	Apr	May	Jun	Jul	Aug	Sep	Oct	Nov	Dec	Grand Total
COPP	1	1	1	1		1	1	1					1
EdPlus at ASU		1	1										1
College of Letters & Sciences									1	1	1	1	1
New College of Interdisciplinary Arts and Sciences		1	1										1
College of Public Service & Community Solutions										1			1
College of Integrative Sciences and Arts		1											1
Global Institute of Sustainability					1	1	1	2	2	1	1	1	2
CASI	2	3	3	3	3	3	3	2	3	3	2	2	3
University Technology Office	3	2	3	2	2	2	2	3	2	2	2	3	5
College of Health Solutions	4	2	6	4	3	4	3	4	4	3	3	2	7
WPC School of Business	5	4	4	4	3	2	3	5	4	5	3	3	12
Biodesign Institute	3	6	7	4	6	4	4	5	7	7	9	6	15
Fulton Schools of Engineering	24	27	28	30	24	28	23	29	26	26	25	27	61
Liberal Arts & Sciences	35	35	37	33	36	37	35	35	40	40	37	36	70
Grand Total	72	77	84	76	72	76	68	78	81	83	77	75	168

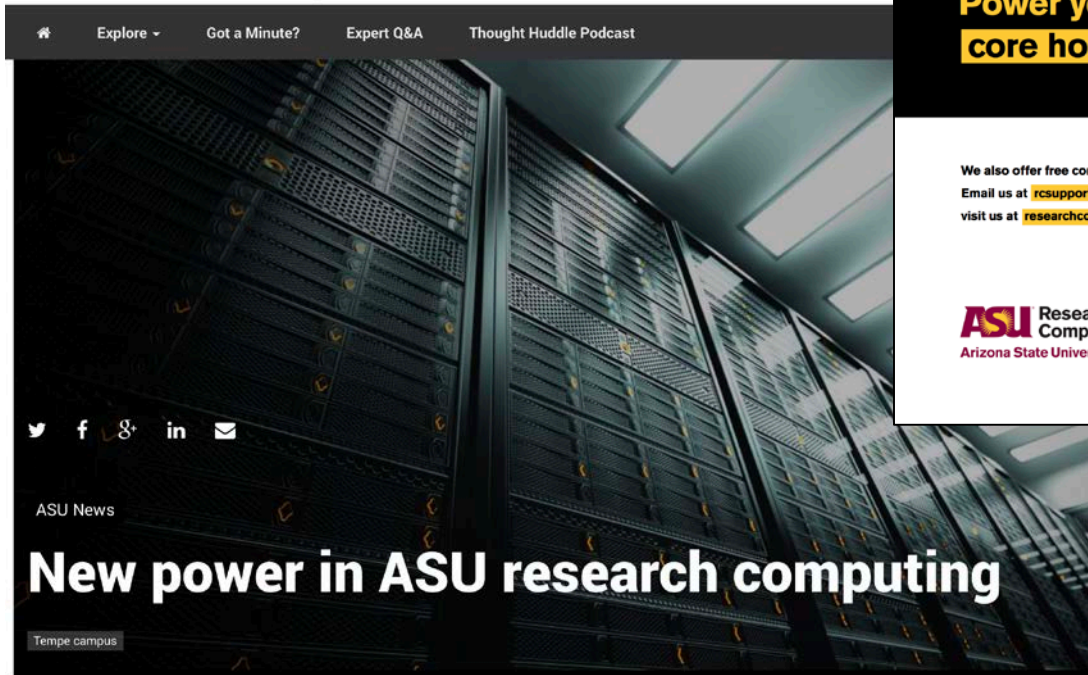
Current Marketing

@asuhpc

Marketing Programs

Research Computing – Marketing

ASU Now: Access, Excellence, Impact



ASU Now: Access, Excellence, Impact

Explore - Got a Minute? Expert Q&A Thought Huddle Podcast

ASU News

New power in ASU research computing

Tempe campus

The screenshot shows a news article on the ASU Now website. The main image is a server room with rows of server racks. The headline reads "New power in ASU research computing" and the sub-headline is "Tempe campus". Navigation links include "Explore", "Got a Minute?", "Expert Q&A", and "Thought Huddle Podcast". Social media icons for Twitter, Facebook, Google+, LinkedIn, and Email are visible.

Power your projects with **25,000 free core hours each month** in 2018!

We also offer free consultations.
Email us at rcsupport@asu.edu and
visit us at researchcomputing.asu.edu

ASU Research
Computing
Arizona State University

ASU Research Computing's high-performance, device- and platform-agnostic computing environments are here to support your research data needs. Our team of experts provides research technology and technical support, including additional core hours for a fee, to ASU faculty, staff, students and collaborators.



ASU Research
Computing
Arizona State University
researchcomputing.asu.edu

The graphic features a yellow background with a white circuit board pattern. It includes the ASU Research Computing logo, the university name, and the website URL. There are also icons for a cloud, a lightbulb, a gear, and a globe.

Training Opportunities

@asuhpc

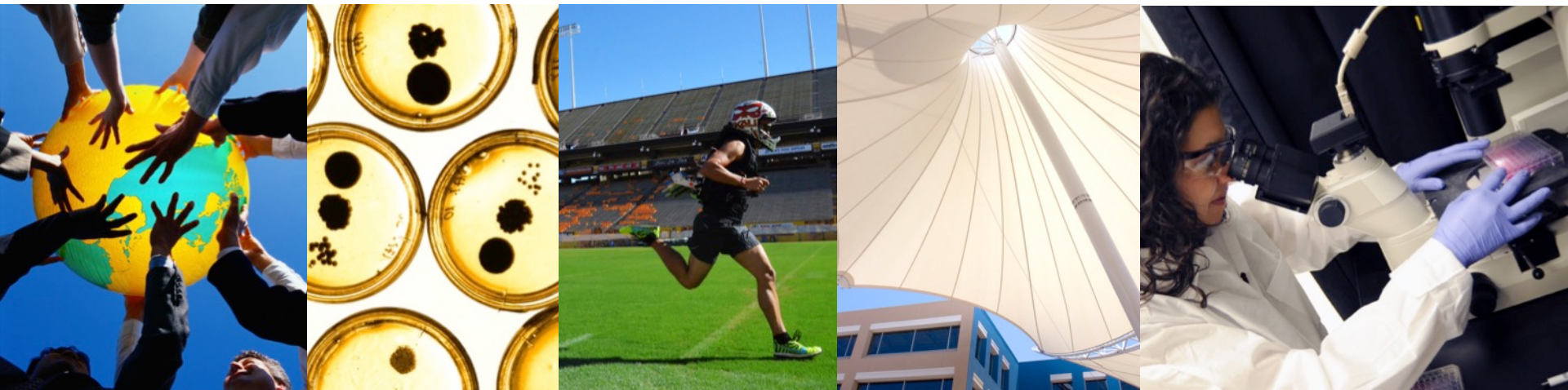
Research Computing – Training

- Cloud Week
- XSEDE HPC Monthly Workshop Series
- ASU Research Computing
- Lead Scientific Science Engineer – Dr. Gil Speyer
- XSEDE Campus Champions



Research Computing – How to engage

- Weekly office hours in Tempe GWC 546
 - Tuesday & Wednesday 1-4 Spring and Fall
 - Tuesday 1-4 Summer
- Email support@hpchelp.asu.edu
- Cyberinfrastructure/Facilities/Data Management Plan (DMP) available at <http://researchcomputing.asu.edu>
- Contact Brandon, Barnaby or Gil directly for specific information
 - Brandon – b@asu.edu
 - Barnaby – barnaby@asu.edu
 - Gil – speyer@asu.edu



Brandon Mikkelsen | Barnaby Wasson

<http://researchcomputing.asu.edu>